

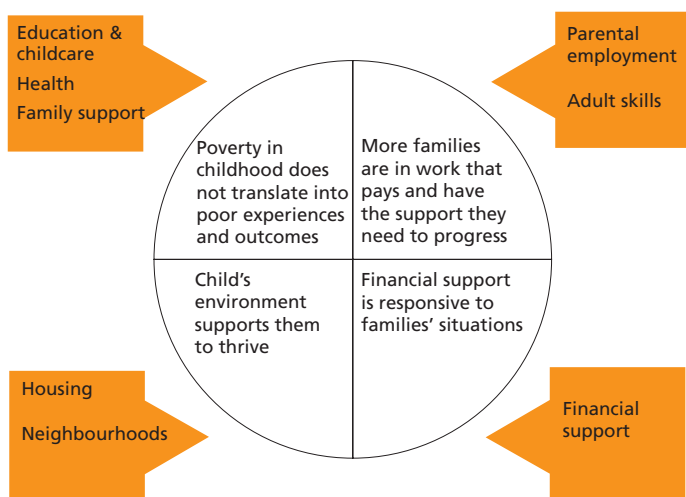
Tackling child poverty: are you on target?

The challenge

There are an estimated 2.9 million children living in poverty in the UK. Extensive research has shown that these children face a greater risk of having poor health, being exposed to crime and failing to reach their full potential in education. With the associated social and economic costs of tackling these issues, child poverty impacts significantly on public finances.

It is recognised that tackling child poverty is a significant and complex challenge, requiring a coordinated approach. Tackling child poverty is everybody's business and involves national, regional and local politicians, policy makers and practitioners all working together. Local authorities and their partners have a particularly important role to play in tackling the problem at a local level.

The Child Poverty Bill identifies a number of duties for local authorities and their delivery partners, with the statutory guidance expected to be published in summer 2010. From 2010 onwards, following Royal Assent of the Child Poverty Bill, local authorities and their delivery partners will be expected to fulfil a number of duties, including carrying out local needs assessments and developing child poverty strategies for the local area. The Child Poverty Unit 'building blocks framework' provides an overarching approach to set and assess a strategy to address child poverty.



This leaflet signposts the information and guidance available from different organisations in a 'core offer' of support for preventing and tackling child poverty at the local level.

Who can benefit?

- local authorities
- local strategic partnerships
- voluntary and community sector organisations
- elected members
- chief executives
- directors of children's services
- policy officers
- children's trusts.

At a glance: what does our support cover?

1. **Political leadership support**
Improvement and Development Agency (IDeA)
2. **Managerial leadership support**
Peer review, Centre for Excellence and Outcomes (C4EO) sector specialists, local authorities with Beacon status
3. **Statutory guidance**
Child Poverty Unit
4. **Good practice examples**
Local authorities with Beacon status, C4EO validated local practice, Child Poverty Pilots, Government Offices
5. **Peer challenge/peer review/peer support**
IDeA, Government Offices
6. **Tailored support**
IDeA, C4EO sector specialists
7. **Strategy and performance**
Government Offices
8. **Access to knowledge**
C4EO, CPU, Government Offices, IDeA.

Who does what?

Centre for Excellence and Outcomes (C4EO)

The C4EO provides three key areas of support:

- Knowledge: best available evidence of what works rooted in research, data and local practice
- Easy access to data and evidence: web-based data tool, presentations, audience-specific products
- Local support: individual tailored support, national and regional workshops, communities of practice.

www.c4eo.org.uk



Child Poverty Unit (CPU)

The CPU brings together the Department for Children, Schools and Families, HM Treasury and Department for Work and Pensions to develop and take forward work to ensure the Government's aim to eradicate child poverty is met. This includes child poverty pilots, research and analysis, as well as supporting the delivery of initiatives to tackle child poverty at a local level.

www.dcsf.gov.uk/everychildmatters/childpoverty

Government Office Child Poverty Network (GOCPN)

The GOCPN focuses on: policy development on the Child Poverty Bill; identifying practice and good practice; connection to Child Poverty (CP) networks across all regions (locality and policy development managers); sharing learning; supporting Local Authority Innovation pilots; and providing guidance and support on Local Area Agreements (LAAs) and CP indicators.

www.gos.gov.uk/national

Improvement and Development Agency (IDeA)

The IDeA works with councils in developing good practice and supporting partnerships. This is done through networks, online communities of practice, web resources, the support and challenge provided by councillor and officer peers and the Beacon and Local Innovation Awards Schemes.

www.idea.gov.uk

www.beacons.idea.gov.uk

Regional Improvement and Efficiency Partnerships (RIEPs)

RIEPs are partnerships of the local authorities in each region and sit at the heart of local support arrangements helping local authorities and their partners to collaborate to improve services and deliver efficiencies. A number of RIEPs have undertaken specific projects to tackle child poverty.

www.idea.gov.uk/rieps

If you would like further information, please visit:

Child Poverty Unit website

www.dcsf.gov.uk/everychildmatters/childpoverty

Child Poverty online community of practice (CoP)

www.communities.idea.gov.uk



INVESTOR IN PEOPLE

IDeA

Layden House
76-86 Turnmill Street
London EC1M 5LG

telephone 020 7296 6880

facsimile 020 7296 6666

email ihelp@idea.gov.uk

www.idea.gov.uk

For a copy in Braille, Welsh, larger print or audio, please contact iHelp on 020 7296 6880
We consider requests on an individual basis

©IDeA – January 2010
L09-978

Produced by Liberata Design and Print Studio